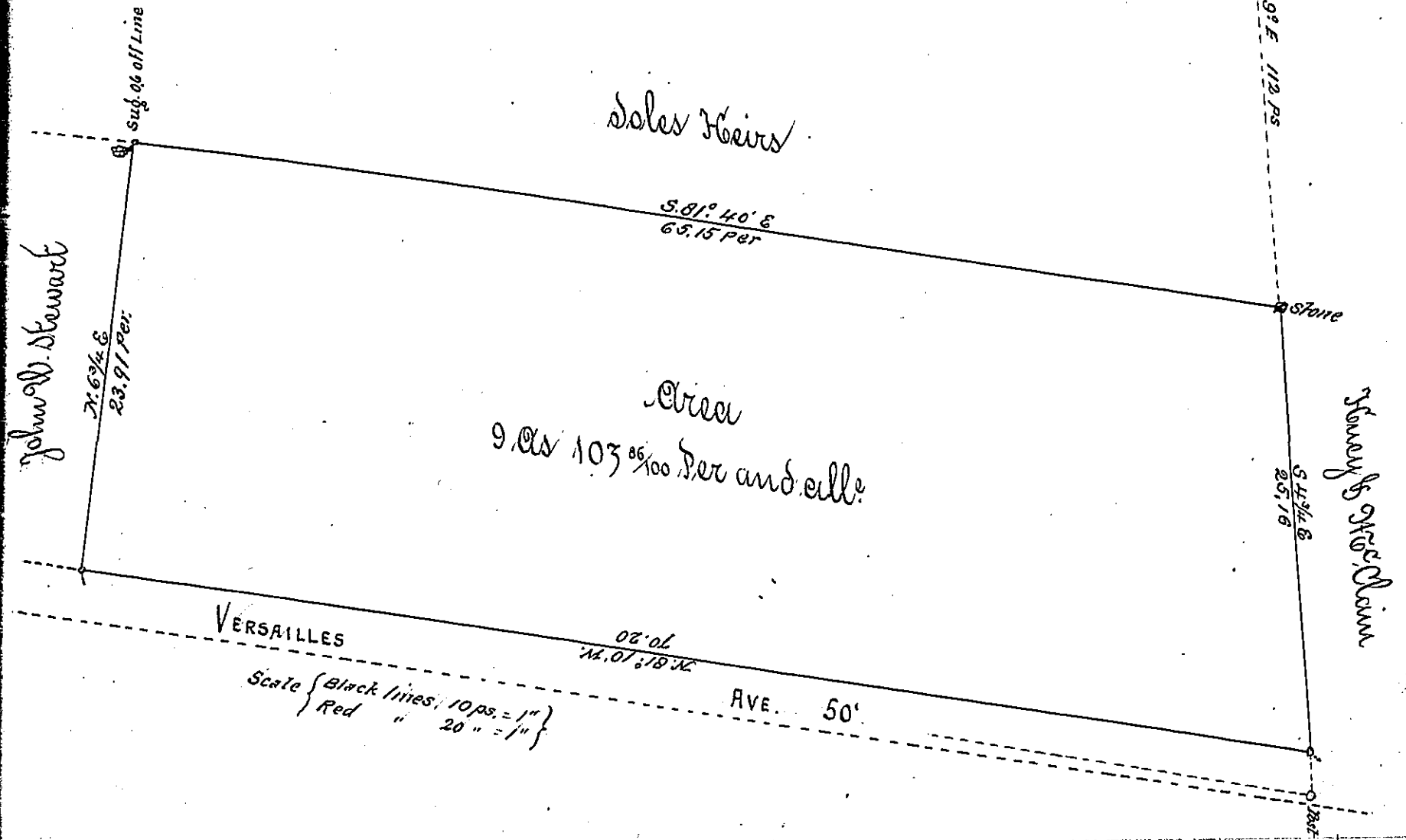


84
475-114
5-253



Draft of a piece of ground, situated in the City of No. Keosaupee, formerly Versailles Township, County of Allegheny, State of Penna. Containing 9 Acres, 103.86 Perches, and allowance of 6 per cent for roads, &c. Surveyed for Thomas No. Waddle, June 21st, 1892, being part of a larger tract of land, containing 212 Acres, 23 Per. and allowance, originally surveyed on order No. 5344 to Jacob Zimet, June 13, 1769.

To the Honorable
Thomas J. Stewart
Secy. of Internal Affairs

W. W. Shaw, Dept. C. S.
Chas. Davis C. S.

IN TESTIMONY that the above is a copy of the original remaining on file in, the Department of Internal Affairs of Pennsylvania, made conformably to an Act of Assembly approved the 16th day of February, 1833, I have hereunto set my Hand and caused the Seal of said Department to be affixed at Harrisburg, this seventh day of July 1903.

Francis P. Brown
Secretary of Internal Affairs.